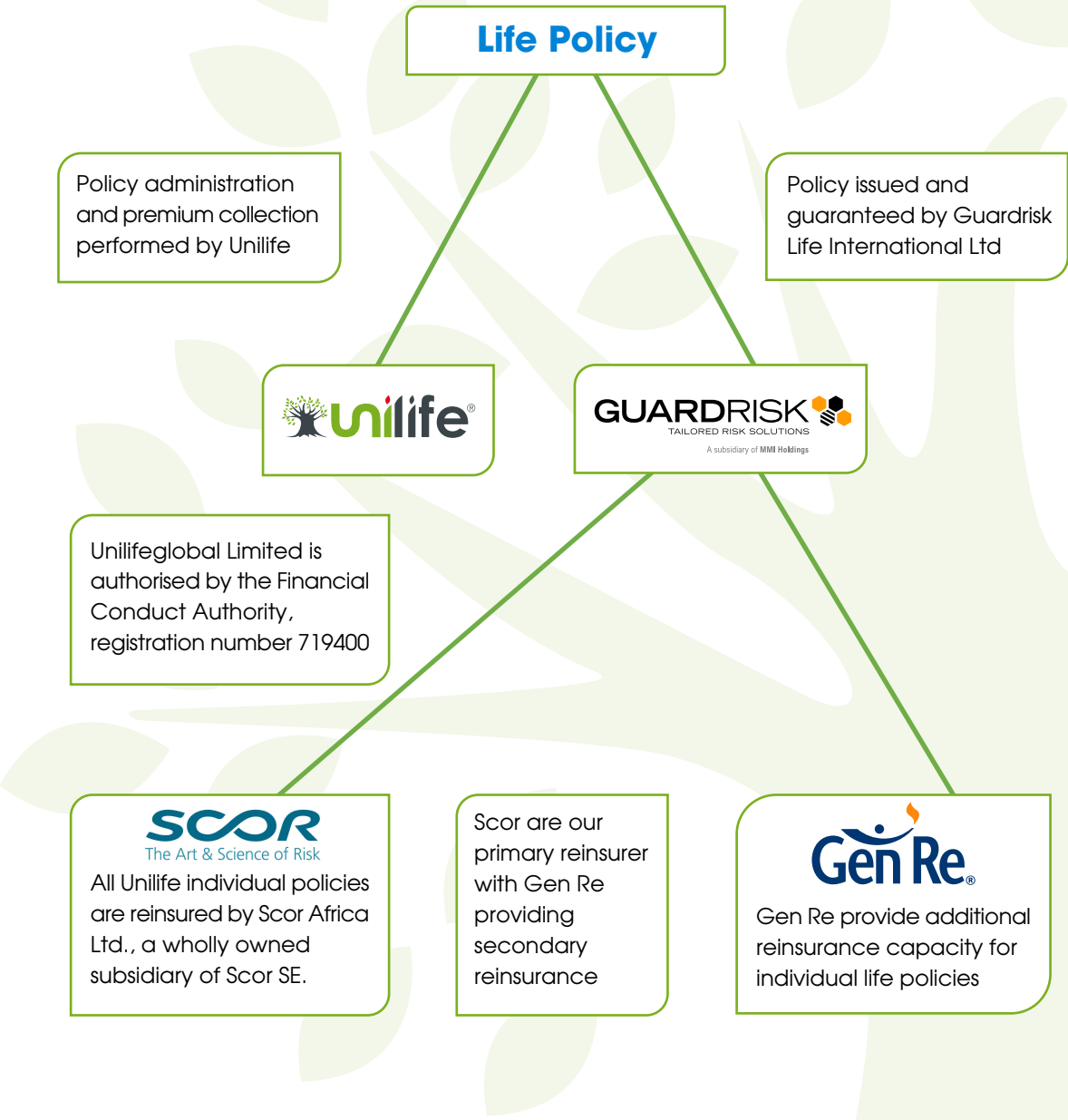


# Counterparty Roles and Responsibilities



# Counterparty Roles and Responsibilities

## More on Guardrisk



Our issuing insurers are a leading provider of risk transfer solutions

- Annual premium income of US \$700 million
- Assets of US \$1 billion
- 1.4x International Solvency Ratio
- Aaa rated by Moody's
- Wholly owned by MMI Holdings

For further details on Guardrisk, including their corporate profile, latest credit ratings and financial reports, see their website: [www.guardrisk.co.za](http://www.guardrisk.co.za)



Listed on the Johannesburg Stock Exchange

- Over 17,500 employees, with operations in 18 countries
- Aaa rated by Moody's

For more information on MMI Holdings, visit: [www.mmiholdings.co.za](http://www.mmiholdings.co.za)

---

## More on SCOR



World's 4th largest reinsurance company

- Scor are the largest life reinsurers in the United States
- Listed on the French Stock Exchange
- Among the 60 largest French public companies

For more information on Scor, including their company profile and latest credit ratings, you can visit [www.scor.com](http://www.scor.com)

---

## More on Gen Re



General Re®, a subsidiary of Berkshire Hathaway Inc., is a holding company for global reinsurance and related operations. It owns General Reinsurance® and General Reinsurance AG, which conduct business as Gen Re.

For more information on Gen Re's direct reinsurance profile, including their latest financial strength ratings, please see their website: [www.genre.com](http://www.genre.com)

A network of over 40 offices and 1,900 employees worldwide